

California Air Resources Board



Reducing Emissions from On-Road Heavy-Duty Diesel Trucks Dedicated to Goods Movement at California Ports

Public Workgroup Meeting
January 9, 2007



Agenda

- Introductions
- Overview of workgroup goals/objectives
- First workgroup review
- Regulation concept
- Implementation concept
- Future meeting
- Discussion

Overview of Workgroup Meeting Goals/Objective

- Why a port truck regulation
 - Administrative directive
 - Part of overall goods movement plan
 - Recognized as a main emission source
- Workgroup goals/objectives
 - Devise a regulation that works
 - Meet with stakeholders
 - Definitions
 - Implementation & enforcement
 - Funding

Workgroup Meeting Review

- First meeting – November 13, 2006
 - Purpose of meetings
 - Definitions
 - Ports
 - Port truck
 - Comments from workgroup participants
 - Why regulation affects only 3 ports
 - Type of truck affected
 - Dray-off
 - Need for two regulations

Regulatory Scope Updates

- Ports: Expanded to include all ports
- Port trucks: Expanded to include trucks hauling containers, break bulk, bulk, petroleum, etc.
- Dray-off: Regulation expanded to include trucks servicing railyards
- Clarification of ARB's truck measures

ARB's Two Truck Measures

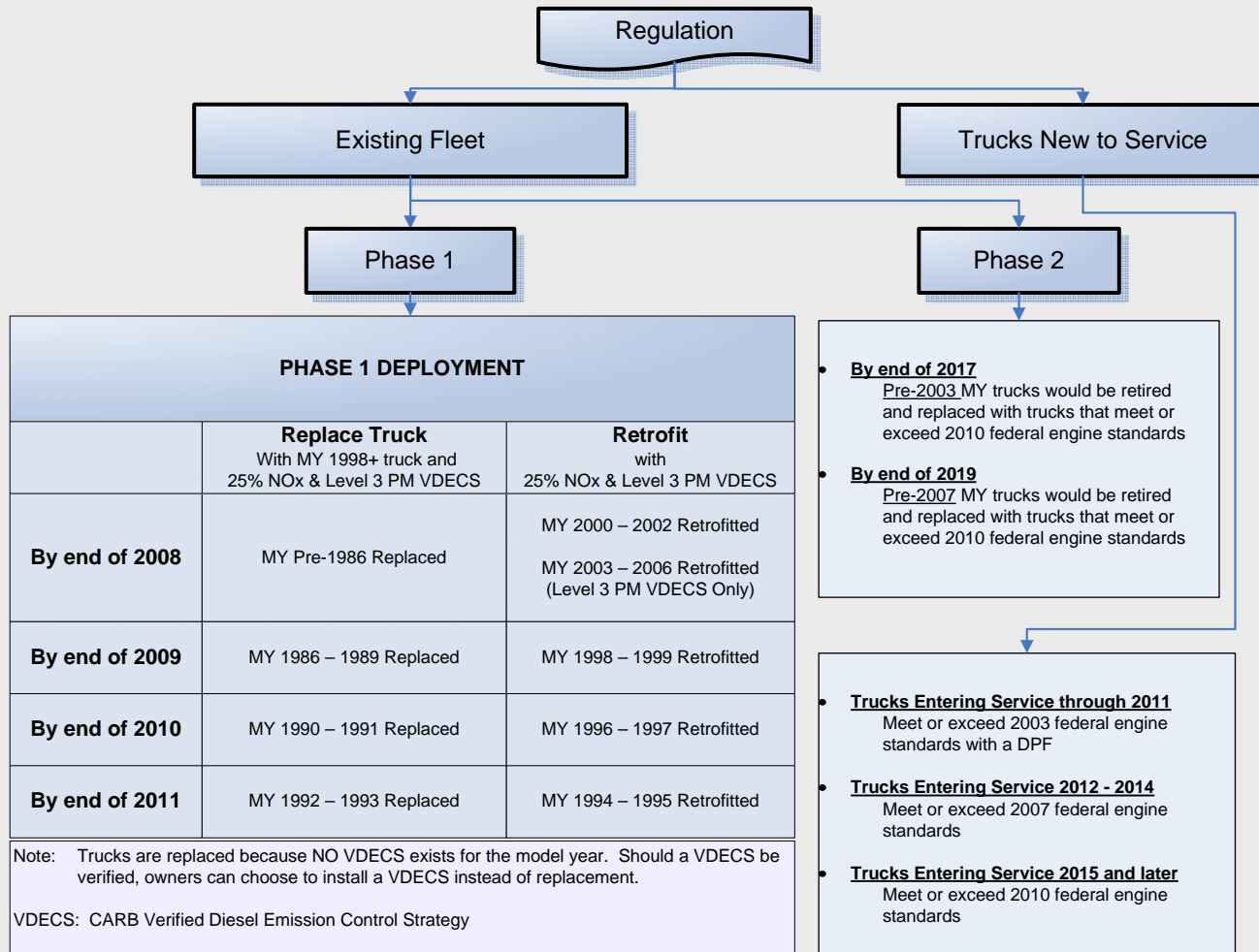
**Port/Intermodal
November 2007**

**Private Fleet
November 2007**

Regulation Concept



Regulation Concept



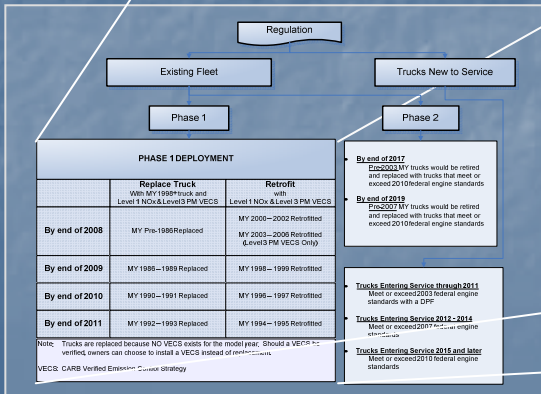
Phase 1

PHASE 1 DEPLOYMENT

	Replace Truck With MY 1998+ truck and 25% NOx & Level 3 PM VDECS	Retrofit with 25% NOx & Level 3 PM VDECS
By end of 2008	MY Pre-1986 Replaced	MY 2000 – 2002 Retrofitted MY 2003 – 2006 Retrofitted (Level 3 PM VDECS Only)
By end of 2009	MY 1986 – 1989 Replaced	MY 1998 – 1999 Retrofitted
By end of 2010	MY 1990 – 1991 Replaced	MY 1996 – 1997 Retrofitted
By end of 2011	MY 1992 – 1993 Replaced	MY 1994 – 1995 Retrofitted

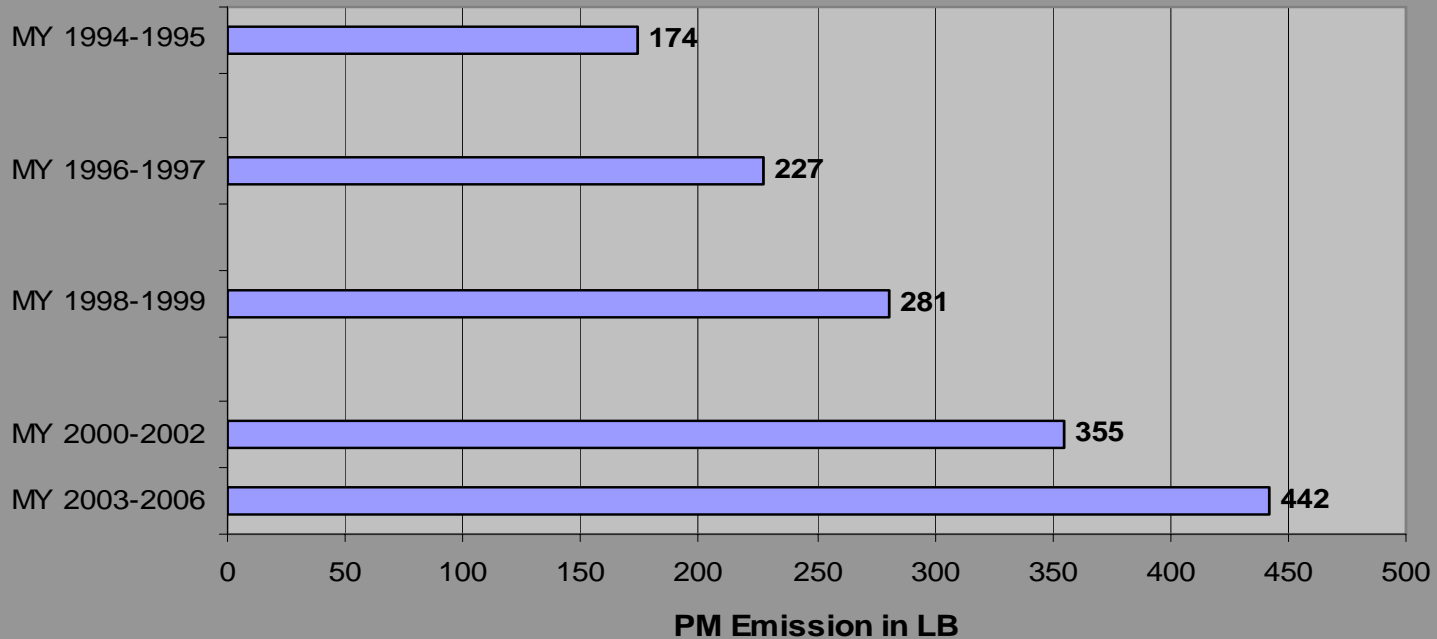
Note: Trucks are replaced because NO VDECS exists for the model year. Should a VDECS be verified, owners can choose to install a VDECS instead of replacement.

VDECS: CARB Verified Diesel Emission Control Strategy



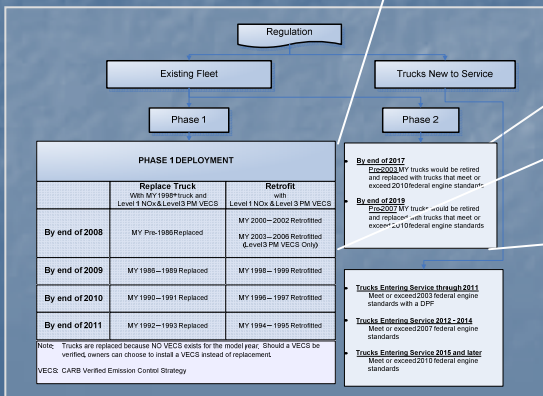
Phase 1 (cont.)

Estimated PM emission benefits over remaining useful live of the truck,if DPF was installed in 2008



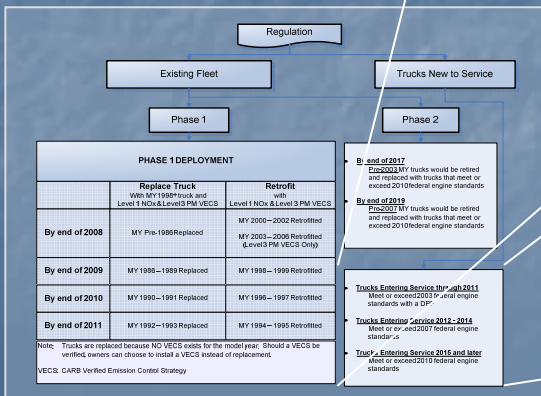
Phase 2

- **By end of 2017**
Pre-2003 MY trucks would be retired and replaced with trucks that meet or exceed 2010 federal engine standards
- **By end of 2019**
Pre-2007 MY trucks would be retired and replaced with trucks that meet or exceed 2010 federal engine standards



Trucks New to Service

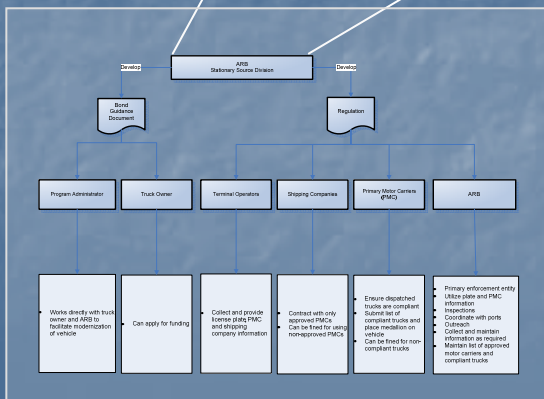
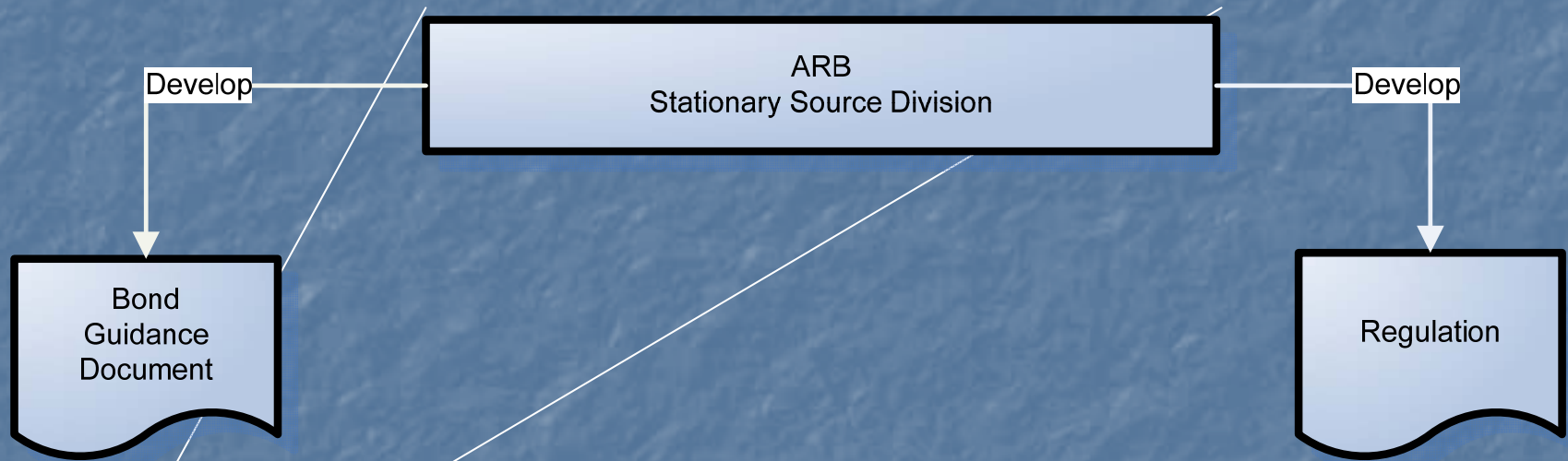
- **Trucks Entering Service through 2011**
Meet or exceed 2003 federal engine standards with a DPF
- **Trucks Entering Service 2012 - 2014**
Meet or exceed 2007 federal engine standards
- **Trucks Entering Service 2015 and later**
Meet or exceed 2010 federal engine standards



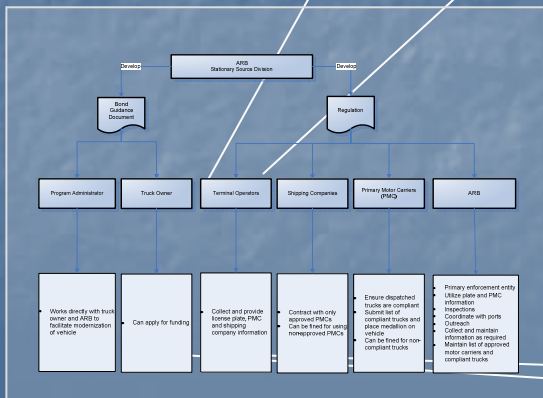
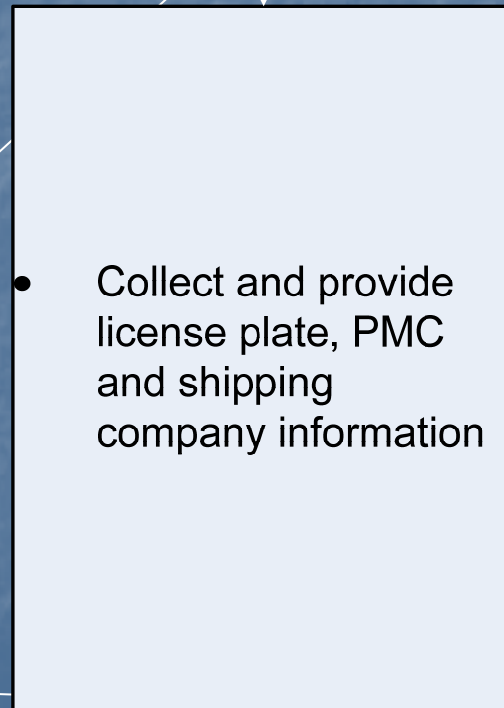
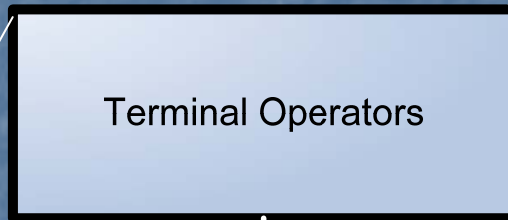
Implementation Concept



Implementation Concept (cont.)



Implementation Concept (cont.)

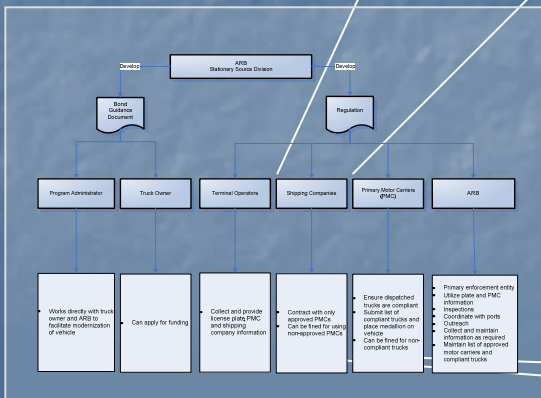


Implementation Concept (cont.)

Shipping Companies



- Contract with only approved PMCs
- Can be fined for using non-approved PMCs

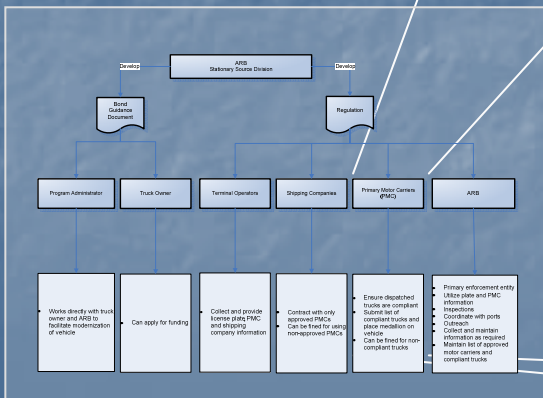


Implementation Concept (cont.)

Primary Motor Carriers



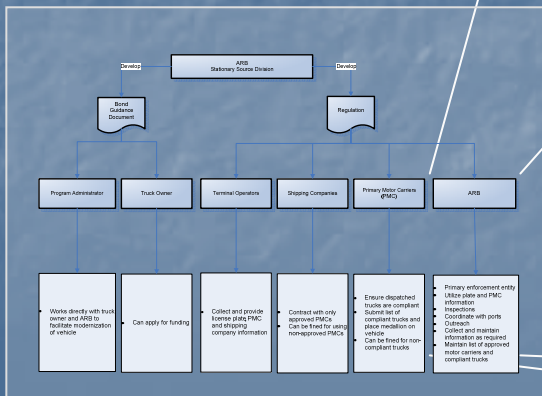
- Ensure dispatched trucks are compliant
- Submit list of compliant trucks and place medallion on vehicle
- Can be fined for non-compliant trucks



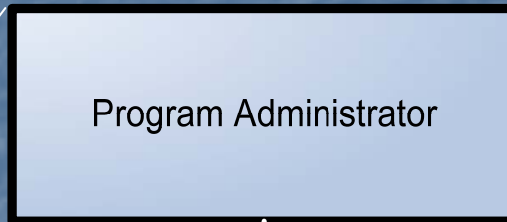
Implementation Concept (cont.)



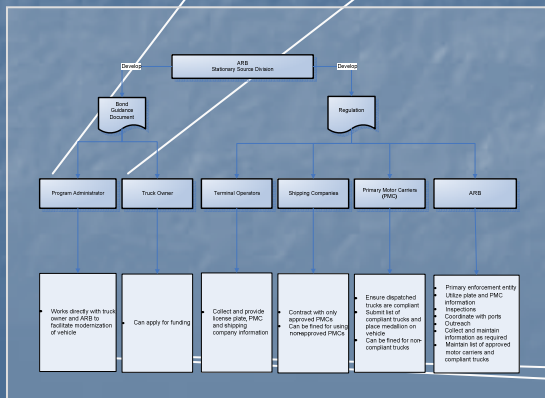
- Primary enforcement entity
- Utilize plate and PMC information
- Inspections
- Coordinate with ports
- Outreach
- Collect and maintain information as required
- Maintain list of approved motor carriers and compliant trucks



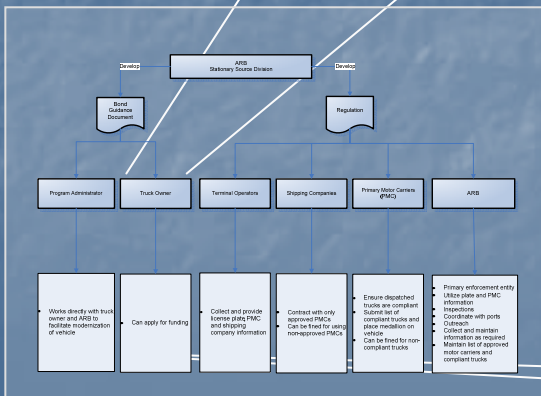
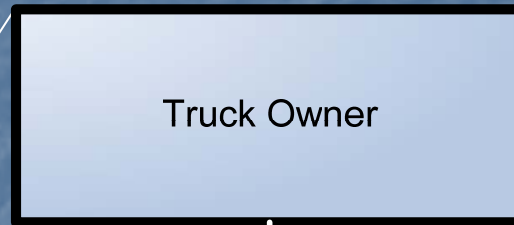
Implementation Concept (cont.)



- Works directly with truck owner and ARB to facilitate modernization of vehicle



Implementation Concept (cont.)



Action Items

Future Meetings/Contact Info

- Staff Report Including Draft Regulation – Sept. 2007
- Board Consideration – November 2007

- Future Public Workgroup Meeting:
 - To be Determined

- Contact Information:
 - Michael Miguel, Manager
 - Phone: (916) 445-4236
 - email: mmiguel@arb.ca.gov

Website:

<http://www.arb.ca.gov/msprog/onroad/porttruck/porttruck.htm>

Questions/Comments

