



California's Natural and Working Lands Climate Change Implementation Plan

NOVEMBER 16, 2018



California's Natural and Working Lands

rangeland



forests



wetlands



grasslands



farmland



riparian areas



seagrass



urban green-space



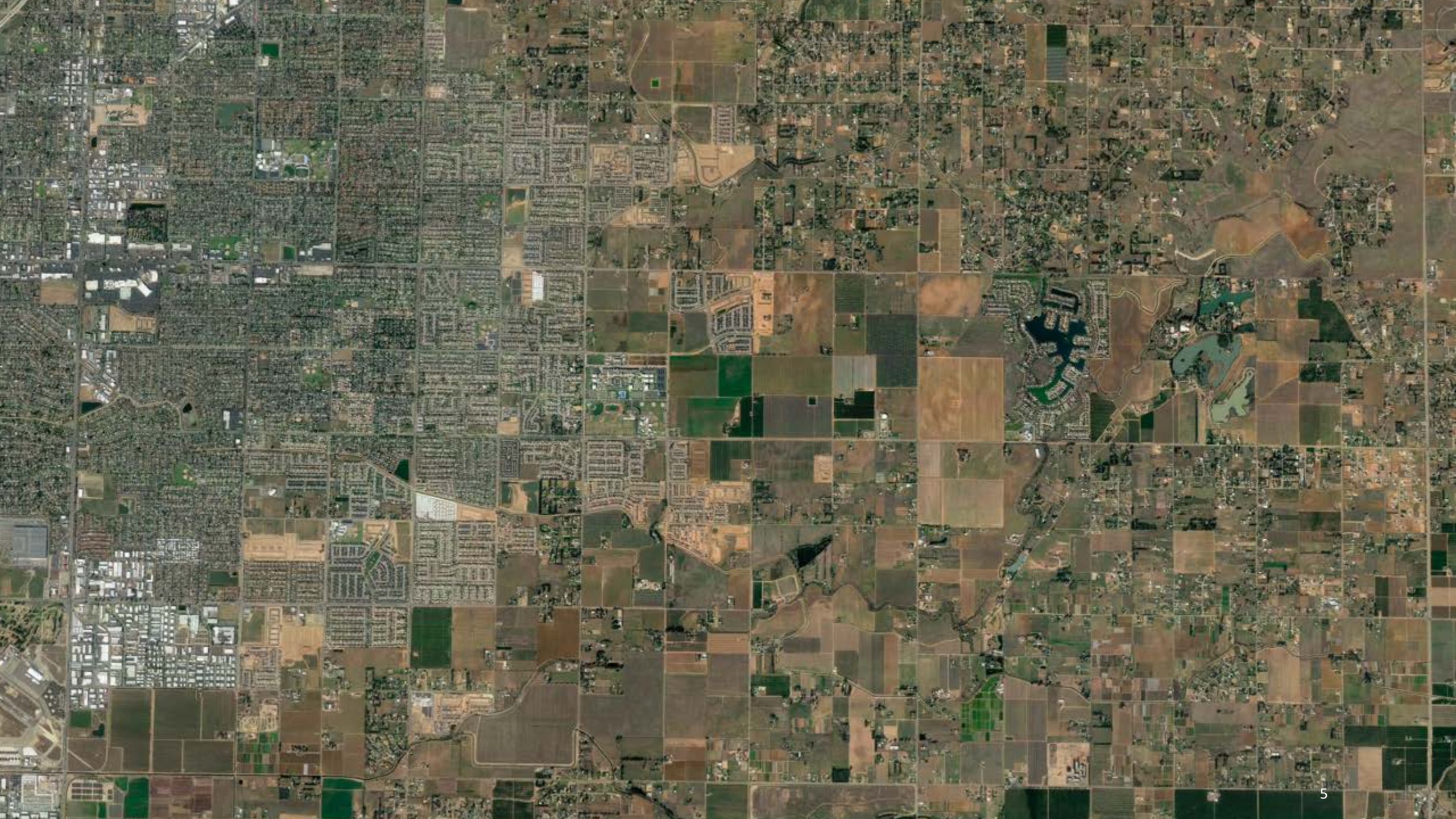
Recent Direction and Commitments

- 2017 Scoping Plan: near-term action needed to meet the long-term objective for lands as a net carbon sink
- Governor's Executive Orders: manage forests, enhance biodiversity, and achieve carbon neutrality
- 2018 IPCC Report: carbon neutrality is needed by 2045 to keep temperature rise to 1.5° C
 - Natural and working lands are critical

Natural and Working Lands: Sink or Source?

- 5.5 Billion MT total ecosystem carbon (2014)
- 170 MMT carbon loss (2001-2014)
 - Equivalent to 635 MMT CO₂e















Untapped Opportunity in Natural and Working Lands

- Proceedings of the National Academy of Sciences: Cameron et al. (2017)
 - 56-147 MMT CO₂e by 2030
- Next10: Marvin et al. (2018)
 - 31-46 MMT CO₂e by 2030
- Science Advances: Fargione et al. (2018)
 - Up to 234 MMT CO₂e by 2030

Activity Examples: Expected Climate Benefits

Pathway	Near-term Climate Benefits (to 2030)	Long-term Climate Benefits (to 2050/2100)
Coastal wetlands restoration		
		
		
		
		

Past and Current Efforts

**Resource
Management
Objectives**

**Climate
Objectives**

Double the Pace and Scale of State-Supported Land Restoration Activities by 2030 and Beyond

Cultivated & Rangeland



5x

State-funded acres in soil conservation practices

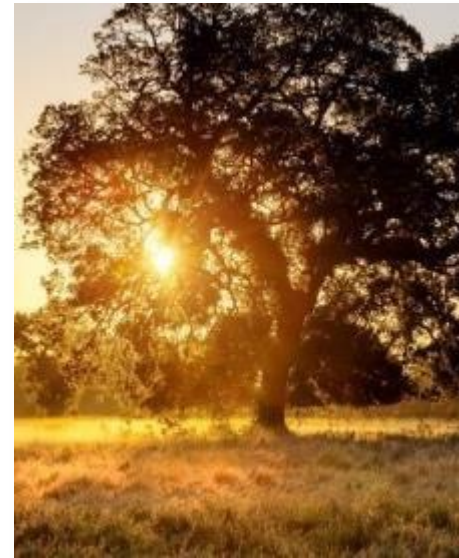
Forest Land



2x

Pace and scale of forests managed or restored

Savanna and Woodland



3x

Pace of reforestation of oak savannas and riparian areas

Wetlands & Seagrass

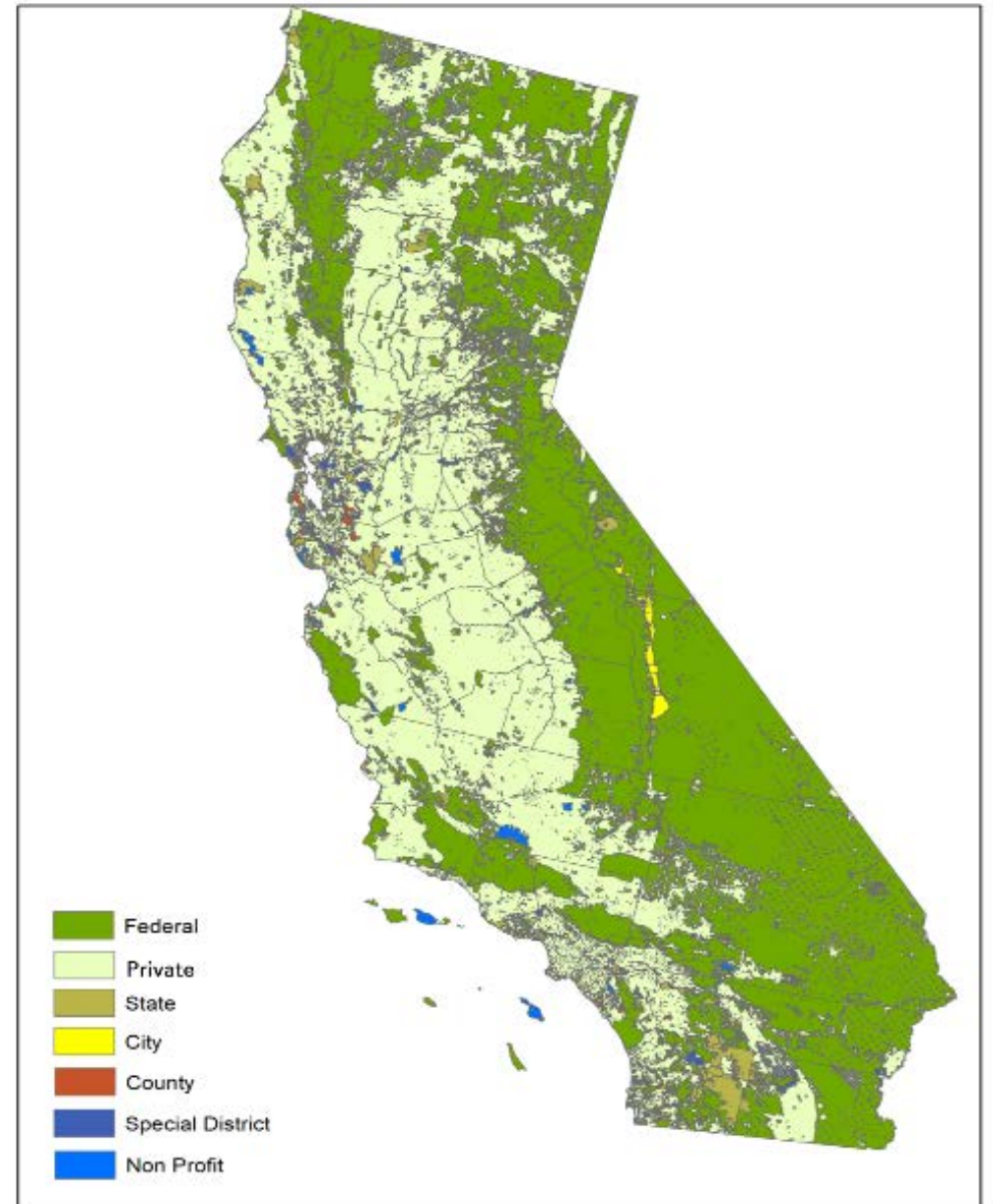


2x

Rate of wetland and seagrass restoration

Land Ownership

Ownership	% of Total Acreage
Federal	48%
Private	47%
State	3%
City/County/Special District	< 2%
Non-Profit	< 1%



Next Steps

- Finalize Implementation Plan for State action
- Explore how to expand beyond State-supported activities
- Continue to develop quantification approaches including methods to assess cross-sector interactions
- Further integrate sector into next Scoping Plan Update